

JULY-AUGUST  
*Summer*  
2020



**TOP  
WORK  
PLACES  
2019**  
Chicago Tribune

**Resident and Courts Plus Registration  
Non-Resident Registration  
NOW OPEN!**



**630.993.8900 | epd.org**

**100** YEARS  
*of having fun!*  
ELMHURST *Park* DISTRICT



A smile is the prettiest thing you can wear.

SMILE

630-832-8320



**FREE**  
CONSULTATIONS

Our practice specializes in orthodontics for all ages.

Visit our website to complete a Virtual Consult!

275 N. York, Ste. 200  
Elmhurst, IL 60126

[smilesbyaos.com](http://smilesbyaos.com)


(630)832-8320

**236 UNITS SOLD | \$109,000,000**

2019 CLOSED UNITS AND SALES (TOTAL)\*

**#2** TOP 10  
*DuPage*  
AGENTS†

**#11** TOP 20  
*Chicagoland*  
AGENTS†



ahead of  
the curve

**@Schiller | @properties®**

**LOCAL AGENTS • LOCAL RESULTS**

Elmhurst Office: 136 W Park Avenue • Lombard Office: 9 S Park Avenue • [theschillerteam.com](http://theschillerteam.com)

Stop looking, start finding® [atproperties.com](http://atproperties.com) 🏠

†Chicago Agent Magazine, 2019

\*MRED 1/1/2019-12/31/2019 for all Team Sales.



CARE FROM THE  
**COMFORT**  
OF HOME

**DuPage Medical Group**

WE CARE FOR YOU

[f](#) [t](#) [@](#) [v](#) DuPageMedicalGroup.com

**e-VISITS | VIDEO VISITS | ONLINE SCHEDULING**

Getting to your doctor's office isn't always possible, but that doesn't mean you have to sacrifice getting the care your family needs. At DuPage Medical Group, you can consult with a primary or specialty care physician securely on your mobile device or computer through the MyDMG Health app. Visit face-to-face with a provider via Video Visit, message with a physician over e-Visit or schedule your next in-office appointment online, all without leaving home.

Take care of your family's healthcare to-do list today at [ScheduleDMG.com](#)  
*Video Visits are now covered by most insurance plans!*



**WE'RE PROUD TO SUPPORT THE**  
**ELMHURST PARK**  
**DISTRICT**

Every day, especially during times of uncertainty, we're committed to supporting the families, local businesses, and charitable organizations that make this area great. We're particularly proud to support the Elmhurst Park District and its commitment to providing experiences for the lifetime enjoyment of the community.

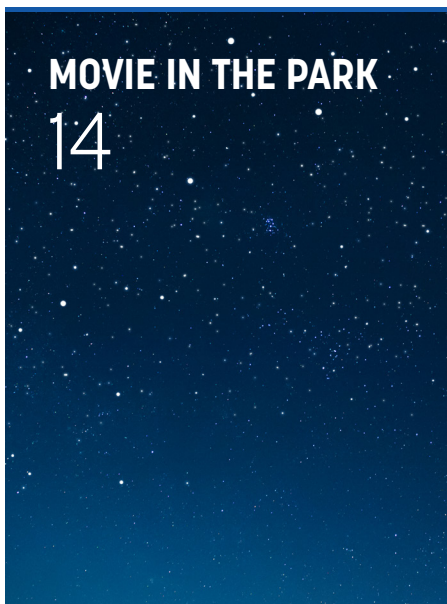
**SUBURBAN**  
**BANK & TRUST**

A WINTRUST COMMUNITY BANK

150 E. Butterfield Rd. | 400 W. Lake St. | Elmhurst  
630-592-2000 | [www.suburbanbank.com](http://www.suburbanbank.com)

# TABLE of CONTENTS

MID-SUMMER 2020 • JULY-AUGUST



- 29 AFFILIATE GROUPS
- 30 ART AT THE ELMHURST ART MUSEUM
- 34 BROCHURE ADVERTISING
- 9 CONTACT LIST
- 26 COURTS PLUS FITNESS CENTER
- 21 DANCE CAMP
- 19 DAY CAMP
- 23 ESPORTS

- 24 GOLF AT SUGAR CREEK GOLF COURSE
- 20 GYMNASTICS CAMP
- 15 THE HUB
- 36 MAP AND GUIDE
- 35 MEMORIALS AND GIFTS
- 14 MOVIE IN THE PARK
- 8 PARK BOARD
- 25 PICNIC RENTALS
- 13 PARK DEDICATION

- 32 REGISTRATION INFO AND FORM
- 22 SPORTS CAMP
- 10 REOPENING CONTINUES
- 16 WILDER PARK CONSERVATORY
- 17 WILDER PARK FORMAL GARDENS

# ABOUT THIS BROCHURE



Our team is working hard to bring back the fun safely. As a result, we have created this mid-summer brochure with brand new programs! As our region progresses through Phase 4: Revitalization under the Restore Illinois Plan, we are excited to announce these new programs and a number of other openings throughout the District.

## CODES

The series of numbers beneath each program description corresponds to that program session. Use this code on your registration form and online. When registering online, search using the first seven digits for all courses in the activity or by exact course code.

## MIN/MAX

The minimum number of participants a program requires in order to run and the maximum amount of participants it can accommodate. These numbers were established with the guidance of the Phase 4 guidelines.

## BROCHURE CHANGES

Occasionally changes in the programs and pricing are necessary after the brochure publication date. We thank you for your patience and understanding when these situations arise.

R/NR: Resident/Non-Resident

M/NM: Member/Non-Member

WCC: Wagner Community Center



**SIGN UP FOR  
OUR E-NEWSLETTER!**

**REGISTRATION IS NOW OPEN.  
REGISTER AT EPD.ORG**



## BROCHURES WILL BE AVAILABLE ONLINE ONLY UNTIL FURTHER NOTICE

Due to the COVID-19 pandemic, this mid-summer and the fall brochure will not be printed or delivered to your homes. To provide you the most up-to-date information, the brochures will be available online only at [epd.org](http://epd.org).

We will continue to review guidelines to determine the best way to safely serve the community while fulfilling

our mission of enriching lives while having fun. Updates made in the brochure will be communicated via email and our social media pages. Please subscribe to our E-newsletter or follow us on Facebook. Thank you for your continued support, patience, and understanding during this time.

# To the Elmhurst Community

I hope this brochure finds your family healthy and safe. The well-being of our community is our top priority and will continue to be our focus as we work to provide programs and events within the guidelines of Phase 4 which enrich our community.

Throughout the quarantine, District parks and trails remained open so that people could enjoy the mental and physical health benefits these spaces provide. During Phase 3 of the Plan, the District was able to reopen tennis courts and offer outdoor fitness classes at Courts Plus and Day Camp 2020.

Now, in Phase 4, we're excited to present more programs to you as well as events, including Movie in the Park in July and August. Many of our facilities, including playgrounds and Wilder Park Conservatory, are open again, with guidelines in place to ensure the health of our visitors.

We're also looking forward to an upcoming virtual park dedication for the former Redeemer Property at 155 E. St. Charles Road. The nearly three acre property preserves open space and addresses a neighborhood without a park. Join us on our Facebook page on Monday, July 13 at 7:00 p.m. to celebrate this happy occasion.

A few other highlights of Phase 4 reopenings include:

- Sand volleyball, roller hockey, futsal and basketball courts have reopened.
- The batting cages and miniature golf will reopen at The Hub along with limited concession items. To celebrate the reopening, both will be free on July 4th!
- Courts Plus staff is putting together a reopening plan and will be communicating more details with members in the coming days. The tentative reopening date is targeted for July 13 as staff can now prepare the facility for the modifications required for social distancing and occupancy limits, in addition to recalling staff from furlough and conducting in-depth training regarding the stringent cleaning and disinfection guidelines put in place for Phase 4.
- Wilder Mansion will reopen July 13 with strict guidelines. Additional details will be released soon.
- Picnic shelters are open and permit requests will be accepted for rentals up to 50 people. Groups above that size will not be considered based on Phase 4 guidelines.
- Water fountains will remain closed per the Governor's Executive Order, however, staff will continue to await guidance on when they will reopen and communicate that to residents.

Be sure to check [epd.org](http://epd.org) or our Facebook page for latest updates on openings and program information.

As a reminder, our brochures will remain digital for the foreseeable future, to provide the Park District maximum flexibility and cost savings.

The Park District continues to review guidelines to determine the best way to safely serve the community while fulfilling our mission of Enriching lives while having fun! We look forward to seeing you once again at the courts, fields, playgrounds and programs.

Vince Spaeth, Board President



VINCE SPAETH  
PRESIDENT



KEVIN GRAF  
VICE PRESIDENT



DOUG ENNIS



MARY E. KIES



CLAIRE KUBIEISA



TIM SHEEHAN



CAROLYN UBRIBACO



## BOARD OF PARK COMMISSIONERS





## OUR MISSION

We enrich lives while having fun!

## OUR VISION

To be a national leader in providing memorable parks and recreation experiences to our community.

## WHO TO CONTACT

Executive Director	Jim Rogers, CPRP	jrogers@epd.org	(630) 993-8930
Director of Enterprise Services	Brian McDermott	bmcdermott@epd.org	(630) 993-8180
Director of Facilities	Angela Ferrentino, CPRP, CTRS, CPSI	aferrentino@epd.org	(630) 993-8915
Director of Finance & HR	Christi Jacobson	cjacobson@epd.org	(630) 993-8196
Director of IT	Allison Wiggins	awiggins@epd.org	(630) 993-8197
Director of Marketing & Communications	Kari Felkamp, CPRP	kfelkamp@epd.org	(630) 993-8923
Director of Parks	Dan Payne, CPRP	dpayne@epd.org	(630) 993-8940
Director of Recreation	Cindy Szkolka, CPRP	cszkolka@epd.org	(630) 993-8910
Dance Camp	Dana Herrera, CTRS	dherrera@epd.org	(630) 993-8921
Day Camp	Joanne Lamb	jlamb@epd.org	(630) 993-8678
Gymnastics Camp	Dana Herrera, CTRS	dherrera@epd.org	(630) 993-8921
The Hub and Garden Plots	Sarah Lagesse, CPRP	slagesse@epd.org	(630) 993-4729
Sports Camp	Joanne Lamb	jlamb@epd.org	(630) 993-8678
Wilder Mansion & Gardens	Brian McDermott	bmcdermott@epd.org	(630) 993-8180

## TITLE ABBREVIATIONS

CPRP Certified Park and Recreation Professional


CTRS Certified Therapeutic Recreation Specialist

CPSI Certified Playground Safety Inspector

# REOPENING CONTINUES

## PHASE 4: REVITALIZATION

The Elmhurst Park District looks forward to continuing to reopen and fulfill its mission of enriching lives while having fun! In accordance with the State of Illinois' Restore Illinois Plan, staff continues to plan for the return of programming and reopening of facilities as detailed in Phase 4. We continue to monitor the progress as we move through these phases, and we are prepared to adjust our plan. Visit [epd.org](http://epd.org) for more information.

	PHASE 4: REVITALIZATION
THE ABBEY	CLOSED UNTIL FURTHER NOTICE
ADMINISTRATIVE OFFICE	OPEN
ATHLETIC FIELDS	OPEN
BASKETBALL COURTS	OPENING JUNE 26-JULY 3
COURTS PLUS	REOPENING WITH RESTRICTIONS JULY 13
EAST END POOL	CLOSED UNTIL SUMMER 2021
GARDEN PLOTS	OPEN
THE HUB 	OPENS JULY 4 • FREE TO COMMUNITY OPENING DAY!
OUTDOOR COURTS	OPEN • VOLLEYBALL, ROLLER HOCKEY, AND FUTSAL
OUTDOOR WEDDINGS	OPEN WITH RESTRICTIONS
PICKLEBALL COURTS (Crestview Park)	OPEN
PICNICS & SPECIAL USE PERMITS	OPEN FOR GROUPS OF UP TO 50
PLAYGROUNDS	OPEN
RESTROOMS	OPEN
SKATE PARK	OPEN
SMALLEY POOL	CLOSED UNTIL SUMMER 2021
SUGAR CREEK GOLF COURSE	OPEN
TENNIS COURTS	OPEN
TURF FIELDS	OPEN
TRAILS AND WALKING PATHS	OPEN
WAGNER COMMUNITY CENTER	OPEN FOR PROGRAM PARTICIPANTS ONLY
WILDER PARK CONSERVATORY	OPEN
WILDER MANSION	REOPENING WITH RESTRICTIONS JULY 13

\*THE HUB SPRAYGROUND TO BE DETERMINED



# open PARK DISTRICT FACILITIES

Due to the COVID-19 pandemic, hours for facilities may vary. Please see below or call us for more information.

Administrative Office	375 W. First Street	(630) 993-8900	Mon-Fri	8am-5pm
Courts Plus Fitness Center	186 S. West Avenue	(630) 833-5064	See page 26 for more info	
The Hub at Berens Park	493 Oaklawn Avenue	(630) 782-4955	See page 15 for hours	
Sugar Creek Golf Course	500 E. Van Buren, Villa Park	(630) 834-3325	Open daily until dusk	
Wagner Community Center	615 N. West Avenue	(630) 993-8901	Open for program participants only	
Wilder Mansion	211 S. Prospect Avenue	(630) 993-8186	Reopening July 13	
Wilder Park Conservatory	225. S. Prospect Avenue	(630) 993-8900	Open daily	8 am -6 pm

## CODE OF CONDUCT

The Elmhurst Park District is dedicated to providing a safe, fun environment. Our positive approach is geared towards instilling an enjoyment of physical activity and teaching skills to foster self-confidence and positive self-esteem. Participants, spectators, and parents are expected to exhibit appropriate behavior and be respectful of others at all times when using District parks and facilities, including:

- Abiding by all laws and rules.
- Treating all participants, spectators, parents, District staff and law enforcement with respect and as individuals, regardless of their race, sex, gender-identification, creed or ability.
- Not using any foul, abusive, harassing, sexually suggestive, or intimidating/menacing words, gestures, body language, or behavior towards any participant, spectator, or parent.
- Refraining from and reporting

- any use of alcohol, tobacco, illegal substances, weapons, or devices that may be used as a weapon.
- Not using violence or unwanted physical contact against a participant, spectator, or parent.
- Controlling and taking responsibility for your actions/inactions and the consequences of your actions.
- Always treating the facilities, equipment, supplies, and property with respect.

Additional rules may be developed for specific activities and leagues as deemed necessary. To ensure the District's programs and facilities remain safe and enjoyable, all reported incidents will be investigated on a case-by-case basis. Participant's, spectator's, and parent's behavior is the responsibility of that individual. Violation of this Code of Conduct or any inappropriate behavior may result in loss of privileges.



**100** YEARS  
*of having fun!*  
ELMHURST Park DISTRICT





*Virtual*

 **LIVE**

# PARK DEDICATION

As we celebrate the park district's 100th anniversary, we're excited to unveil the name of Elmhurst's first new park in more than three decades.

**JULY 13  
7 PM  
FACEBOOK**

We'll be hosting a virtual park dedication for the former Redeemer Center Property at 155 E. St. Charles Road. Join us on our Facebook page on Monday, July 13 at 7 p.m. to celebrate this historic occasion.

**@ELMHURST  
PARKDISTRICT**

TOGETHER WITH THE ELMHURST PUBLIC LIBRARY •

# MOVIE *in the* PARK



**AUGUST  
7  
WILDER PARK  
CHECK IN BEGINS 7:30**

Elmhurst Park District has teamed up with Elmhurst Public Library to offer a free showing of *Field of Dreams* on August 7! Households must reserve a circle, and there is a max of 8 people per circle. Attendees must be in the same household. Once you reserve your circle, please print out or bring your confirmation on your phone to check in the night of the event. Reserved circles will be first come first serve, and seating will begin at 7:30 pm. We ask that families stay within their circle for the duration of the movie, and masks will be required when outside your circle.

**SUBURBAN  
BANK & TRUST**  
A branch of Hinsdale Bank & Trust Company  
A WINTRUST COMMUNITY BANK

**Healthy Driven**  
Edward-Elmhurst  
HEALTH

The movie will begin at approximately 9 pm or when it's dark. No food trucks or sponsor tents will be on site so feel free to bring dinner and drinks (no alcohol is allowed in the park). Registration will be available on our website soon!

Thank you to our presenting sponsors Suburban Bank & Trust, Edward-Elmhurst Health, and The Schiller Team !

**@Schiller | @properties**



**PLEASE BRING YOUR MASK**

14 *Mid-Summer* 2020

# the hub



# REOPENING

**BATTING CAGES • MINI GOLF • CONCESSIONS**

## HOURS

**4TH OF JULY  
HOURS  
11 AM-4 PM**

**BATTING CAGES,  
MINI GOLF &  
CONCESSIONS  
REGULAR HOURS  
(7/5-8/18)  
10AM-6PM**

Beginning on the 4th of July, we're reopening the batting cages, mini golf, and concessions at The Hub! We're thrilled to have you back. The batting cages and mini golf will be free to the community that day. Limited concessions will also be available. Please practice social distancing as you play with us at The Hub. We are working hard to get the sprayground open, too! Please stay tuned for details on the opening of the sprayground.



**PLEASE BRING YOUR MASK**





W I L D E R P A R K

# Conservatory

E L M H U R S T P A R K D I S T R I C T

Wilder Park Conservatory is open! Since 1923 the Wilder Park Conservatory has served as a visual and verifiable link to our past, taking on an iconic and symbolic place in the history of Elmhurst and the hearts and minds of its residents. The newly-restored Conservatory logs approximately 13,000 visits annually and is a memorable place for the marking of life events such as weddings, proms, graduations, and holidays. The Conservatory was the very first Elmhurst Park District capital project and serves as a symbol of the longtime commitment of the community to horticultural programs.

## CONSERVATORY HOURS

8 a.m.-6 p.m. daily

## REOPENING GUIDELINES

- Entrance through the front door only
- Exit through the rear “link” door only
- All doors will be propped open to lessen contact points (during weather appropriate conditions)
- Kaleidoscope will be removed through the end of the pandemic
- One “group” per time may enter the conservatory
- Floor markings for social distancing and directing traffic flow will be used



PLEASE BRING YOUR MASK





# Garden Weddings

## WILDER PARK FORMAL GARDEN

Now booking for outdoor weddings in the Wilder Park Formal Garden of 50 people or less.

Contact us at (630) 993-8186 to get started.

WILDER *W* MANSION



RESIDENTS/NON-RESIDENTS

**REGISTRATION  
IS NOW OPEN!**

EPD.ORG

WELCOME TO

# CAMP 2020

While our traditional summer programs have been cancelled this summer, that does not mean we do not have plans for fun! We are excited to welcome recreation participants back with alternative summer programs in dance, gymnastics and sports beginning July 13! Day Camp has been back during Phase 3 and we still have spots open for you!

These programs will come with updated guidelines. Masks and hand sanitizer will be incorporated into the day as recommended by the IDPH. Elmhurst Park District will do our best to create environments where children are free to play and enjoy the summer without using a face covering, but there will be times when it is required.

We look forward to having fun with you!



# DAY CAMP



# CAMP

## 2020

Ages 6 1/2-10 as of June 1

The 'traditional' Funseekers and Courts Plus Summer Camps that many children have enjoyed through the Elmhurst Park District will not be offered this summer. Day Camp 2020 is our alternate summer program that will exist within the guidelines. The Wagner Community Center location will be a two week session camp. Our camp will include many of the features you love from our camps, including well-planned activities led by our experienced and enthusiastic staff. There will be no field trips or pool trips during our camps, but we will strive to create a fun, interactive experience for our campers! Day Camp 2020 will be held outdoors as much as possible. With no field trips, camp activities will include games with physical distancing, arts and crafts, exercise, brain games and more. Masks and hand sanitizer will be incorporated into the day as recommended by the IDPH.

### Camp Sessions:

- Campers must be signed in and out by an adult.
- Drop off time is 8-9 a.m. We will not accept campers after 9 a.m. Pick up time is 3-4 p.m., early pick-up is not allowed. No before or after care will be available.
- The deadline for camp registration, withdrawals and changes is 9 a.m. on Monday the week before each two week session begins.

### What to Bring:

Please see **Day Campers: What to Bring** box for full list.

**Location:** Wagner Community Center

**Fee:** \$430R/\$516NR

RC03210-02	M-F	7/6-7/17	8am-4pm
RC03210-03	M-F	7/20-7/31	8am-4pm
RC03210-04	M-F	8/3-8/14	8am-4pm

## DAY CAMPERS WHAT TO BRING

### FACE COVERING/MASK

All campers will be required to bring and wear a face covering when social distancing measures cannot be obtained. Participants will be expected to come to camp with a mask on.

### BIN OR LAUNDRY BASKET

This will be used for campers to keep ALL their belongings in while at camp. All bins/baskets should be plastic.

### LUNCH & SNACK

Should be fully disposable.

### WATER BOTTLES

Campers should bring enough water to last them for the entire day. According to the CDC and the Illinois Department of Public Health campers will not be able to refill their water bottles and/or drink from a water fountain.

### BEACH TOWEL OR BLANKET

For campers to sit on while outside.

### SUNSCREEN

Campers are responsible for applying their own sunscreen at designated times throughout the day.

### BACKPACK (OPTIONAL)

May be brought if your child needs to store extra clothes, books or other personal items.

**CAMPERS NEED TO BRING ALL THEIR BELONGINGS HOME AT THE END OF EACH DAY**



# GYMNASTICS CAMP

2020

Ages 6 1/2-10 as of June 1

Gymnastics Camp 2020 will provide a fun, challenging atmosphere that includes basic instruction on all gymnastics events, indoor and outdoor games, dance and plenty of fun! No prior gymnastics experience is needed, just a willingness to have fun! Please read the Parent Handbook, we will be strictly adhering to the Illinois Department of Health safety guidelines. Masks and hand sanitizer will be incorporated into the day as recommended by the IDPH. Elmhurst Park District will do our best to create environments where children are free to play and enjoy the summer without using a face covering, but there will be times when it is required.

## Camp Sessions:

- Campers must be signed in and out by an adult.
- Morning sign in begins at 9:45 a.m. Camp will start promptly at 10:15 a.m. We will not accept a camper after 10:15 a.m.
- The deadline for camp registration, withdrawals and changes is 9 a.m. on Monday the week before each two week session begins.

## What to Bring:

Please see **Gymnastics Campers: What to Bring** box for full list.

**Location:** Wagner Community Center

**Min/Max:** 4/9

**Fee:** \$100R/\$120NR

## Girls

RU090216-01	M-F	7/13 - 07/17	10:15am-12:15pm
RU090216-02	M-F	7/20-7/24	10:15am-12:15pm
RU090216-03	M-F	7/27-7/31	10:15am-12:15pm
RU090216-04	M-F	8/3-8/7	10:15am-12:15pm

## Boys

RU090217-01	M-F	7/13 - 07/17	10:15am-12:15pm
RU090217-02	M-F	7/20-7/24	10:15am-12:15pm
RU090217-03	M-F	7/27-7/31	10:15am-12:15pm
RU090217-04	M-F	8/3-8/7	10:15am-12:15pm

20 Mid-Summer 2020

## GYMNASTICS CAMPERS WHAT TO BRING

### FACE COVERING/MASK

All campers will be required to bring and wear a face covering when social distancing measures cannot be obtained. Participants will be expected to come to camp with a mask on.

### BACKPACK

All campers should have a backpack that is clearly labeled with their name.

### WATER BOTTLES

All water bottles should be reusable and clearly labeled with camper's name.

### WATER

Campers should bring plenty of water. Water fountains will not be available.

### GALLON SIZED BAG OR SMALL BIN

Campers will receive their own chalk, please bring a gallon sized bag or a small bin for gymnasts to store and apply chalk.

## GYMNASTICS ATTIRE WHAT TO WEAR

Participants are to dress appropriately for gymnastics. No socks – barefoot is best!

### GIRLS

Leotard and shorts, or tight fitting t-shirt and shorts, hair **MUST** be tied back, no jewelry.

### BOYS

T-shirt and shorts



Elmhurst Park District

# DANCE CAMP 2020

*Ages 6 1/2-10 as of June 1*

## DANCE CAMPERS WHAT TO BRING

### FACE COVERING/MASK

All campers will be required to bring and wear a face covering when social distancing measures cannot be obtained. Participants will be expected to come to camp with a mask on.

### BAG

All campers should have a bag that is clearly labeled with their name.

### WATER BOTTLES

All water bottles should be reusable and clearly labeled with camper's name.

### WATER

Campers should bring plenty of water. Water fountains will not be available.

## DANCE ATTIRE WHAT TO WEAR

### GIRLS

Pink leather ballet shoes, black tap shoes and clean sneakers.

### BOYS

Black leather ballet shoes, black tap shoes and clean sneakers.

*\*No street worn shoes may be worn in the dance studio.\**

Welcome to Dance Camp 2020! Dance Camp 2020 will emphasize skill development, dance technique, choreography and fun! Throughout each week, dancers will work on ballet, tap and hip hop. Each week will bring a fun new experience! Please read the Parent Handbook, we will be strictly adhering to the Illinois Department of Health safety guidelines. Masks and hand sanitizer will be incorporated into the day as recommended by the IDPH. Elmhurst Park District will do our best to create environments where children are free to play and enjoy the summer without using a face covering, but there will be times when it is required.

### Camp Sessions:

- Campers must be signed in and out by an adult.
- Morning sign in begins at 9:15 a.m. Camp will start promptly at 9:45 a.m. We will not accept a camper after 9:45 a.m.
- The deadline for camp registration, withdrawals and changes is 9 a.m. on Monday the week before each two week session begins.

### What to Bring:

Please see **Dance Campers: What to Bring** box for full list.

**Location:** Wagner Community Center      **Min/Max:** 15/20  
**Fee:** \$91R/\$109NR

RU06228-01	M-F	7/13 - 07/17	9:45-11:45am
RU06228-02	M-F	7/20-7/24	9:45-11:45am
RU06228-03	M-F	7/27-7/30	9:45-11:45am
RU06228-04	M-F	8/3-8/7	9:45-11:45am

Elmhurst Park District

# SPORTS CAMP

2020

Ages 6 1/2-10 as of June 1

Sports Camp 2020 will emphasize skill development and fundamental knowledge of various sports. In addition to the classics of soccer, baseball and basketball, campers will have the chance to experience other unique sports. Please read the Parent Handbook, we will be strictly adhering to the Illinois Department of Health safety guidelines. Sports Camp 2020 will be held outdoors as much as possible. Masks and hand sanitizer will be incorporated into the day as recommended by the IDPH.

#### Camp Sessions:

- Campers must be signed in and out by an adult.
- Morning sign in begins at 8:45 a.m. Camp will start promptly at 9:00 a.m. We will not accept a camper after 9:00 a.m.
- The deadline for camp registration, withdrawals and changes is 9 a.m. on Monday the week before each two week session begins.

#### What to Bring:

Please see **Sports Campers: What to Bring** box for full list.

**Location:** 155 E. St. Charles Rd (Formerly Redeemer) **Min/Max:** 15/20

**Fee:** \$90R/\$108NR

RP17137-01	M-F	7/13 - 07/17	9-11am
RP17137-02	M-F	7/20-7/24	9-11am
RP17137-03	M-F	7/27-7/31	9-11am
RP17137-04	M-F	8/3-8/7	9-11am

## SPORTS CAMPERS WHAT TO BRING

#### FACE COVERING/MASK

All campers will be required to bring and wear a face covering when social distancing measures cannot be obtained. Participants will be expected to come to camp with a mask on.

#### BAG

All campers should have a bag that is clearly labeled with their name.

#### WATER BOTTLES

All water bottles should be reusable and clearly labeled with camper's name.

#### WATER

Campers should bring plenty of water. Water fountains will not be available.



**REGISTRATION  
OPEN THRU JULY 6  
PLAY FOR FREE!**

# ESPORTS

Elmhurst Park District is offering an opportunity for players of all ages to participate in a 3v3 and 1v1 esports Rocket League competitions this summer in partnership with GGLeagues, a recreational esports league based in Chicago.

Join the new Rocket League league and connect with other community members. Thanks to GGLeagues, they will be offering this league to the community and will run for 5 weeks for FREE! Leagues are broken down by skill level which allows for everyone the opportunity to be crowned the champion.

#### HERE'S HOW YOU CAN SIGN UP:

1. Visit [GGLeagues.com](http://GGLeagues.com) and make an account!
2. Once your account has been created, find the "Leagues" page in the top right corner
3. Click on "Current Leagues"
4. Find and click on the league that best suits you.
5. Find or create a team to join!

Curious to learn more about what Rocket League is?  
[Click here to watch a video.](#)

If there are any questions, please contact [kevino@ggleagues.com](mailto:kevino@ggleagues.com)

REGISTRATION IS  
OPEN NOW THROUGH  
JULY 6 AND IS  
FREE THROUGH  
[GGLEAGUES.COM](http://GGLEAGUES.COM).

PLAY STARTS AT  
7 P.M. ON JULY 15  
FOR 3V3 LEAGUE  
AND 7 P.M. ON JULY  
14 FOR 1V1 LEAGUE.  
PLAYOFFS ARE  
SCHEDULED FOR  
AUGUST 19.





Sugar Creek Golf Course is a 9-hole, par 32 course, owned and operated by the Elmhurst Park District and Village of Villa Park. The course features large, smoothly contoured Penncross bentgrass greens, a 3-acre pond coming into play on four of the nine holes, and excellent turf for golf. It provides a challenge for the more experienced player, yet is short enough for the beginner.

The state of Illinois has approved moving to Phase 4 of the Restore Illinois program which will allow us to expand our driving range back to 100% capacity. Also we will reopen our banquet business for hosting events with a maximum capacity of 50 guests!

WEEKDAY	RESIDENT	NON-RESIDENT
Nine Holes	\$17	\$20
Youth (17 and under)	\$16	\$19
Senior (60 and older)	\$16	\$19
Senior with Discount Card*	\$13	\$13

WEEKDAY	RESIDENT	NON-RESIDENT
Nine Holes	\$19	\$22
Saturday Youth after 11am**	FREE	FREE
Sunday Youth after 5pm**	FREE	FREE

\* Weekday Senior discounts available only with purchase of Senior Discount Card.

\*\*Must be accompanied by regular greens fee paying adult weekends only. Not available on holidays, reservations required. Receive one complimentary Youth greens fee for each paid greens fee.

**SENIOR DISCOUNT CARD - \$50**  
*Ages 60 and older*  
 This Senior Discount card entitles the bearer to \$13 greens fees for 9 holes Monday – Friday before 2 p.m. This card is available at the same price for both residents and non-residents of Elmhurst and Villa Park. The card is not transferable.

**RESIDENT DISCOUNT CARD - \$15**  
*Ages 18 and older*  
 A nontransferable discount card may be purchased for \$15 annually for residents of either Elmhurst or Villa Park with proof of residency. The card entitles the bearer to a reduced greens fee depending on day of week.

**SUGAR CREEK LIGHTED DRIVING RANGE**  
 The practice facility features 25 practice stations with target greens at various yardages. Pin numbers are used at the keypad on the ball dispenser and are available inside the Clubhouse for \$6 for one basket of 35 balls.

**Jun. /Jul. Hours:** Dawn-10 p.m., **Aug. Hours:** Dawn-9 p.m., **Sept. Hours:** Dawn-8 p.m.





# Picnic RENTALS

NOW  
ACCEPTING  
REQUESTS

We're welcoming the community back to the parks with the reopening of picnic rental permits. Picnic permit requests will be accepted beginning July 1 for residents and July 8 for non-residents. Rental booking needs to be made at least 48 hours before use. Groups larger than 50 will not be allowed based on Phase 4 guidelines in the Restore Illinois Plan.

Rental participants will still be expected to practice social distancing during their rental and to not attend if they are not feeling well.

CLICK HERE TO VISIT  
OUR PICNICS & PERMITS  
PAGE TO VIEW MORE  
INFORMATION.

PICNIC PERMITS  
APPLICATIONS CAN  
BE EMAILED TO  
REGISTRATION@EPD.ORG.

# COURTS PLUS

## REOPENING

---

**07.13**

Fitness floor opening to members with reservations and registration for outdoor tennis programs

---

**07.27**

Indoor pool and locker rooms will reopen

We are excited to welcome you back to Courts Plus! With guidance from the State, we are thrilled to announce the reopening of our fitness floor on July 13 and the indoor pool on July 27! With treadmills, ellipticals, bikes, weights, and a pool, Courts Plus has all you need for your workout. Reservations open Wednesday, July 8 at 8 a.m.

Reservation information will be sent to members soon.

Reserve your one hour block on the fitness floor for only \$5. Reservation information will be sent to members soon. Membership billing continues to be suspended. We will have contactless check-in. Staff will be wearing a mask and we ask you to do the same. A mask will be mandatory to come into the facility and will have to remain on as you navigate to where you need to be. Once you are in your designated spot on the fitness floor, you are free to take your mask off.



PLEASE BRING YOUR MASK



# outdoor

## GROUP EXERCISE CLASSES

**WE'RE TAKING YOUR FAVORITE GROUP  
EXERCISE CLASSES OUTSIDE!  
CLASSES AVAILABLE EACH WEEK.**

**CLICK HERE + RESERVE  
YOUR SPOT IN CLASS!**



PLEASE BRING YOUR MASK

# IMMACULATE CONCEPTION GRADE SCHOOL

Elmhurst, Illinois

**Catholic Education from Pre-K 3 through 8th**  
Please call 630-530-3490 to schedule a tour.

[www.icgradeschoolelmhurst.org](http://www.icgradeschoolelmhurst.org)



## Catholic Faith & Sacraments

Academic Excellence

Leadership

Self-Discipline

Prayer

Christian Service

Sportsmanship

Community

Before & After School Care

Morning Pre-K 3 (3 or 5 Days)

Full & Half Day Pre-K 4

Full & Half Day Kindergarten

Full-Time Nurse

Classroom Differentiation

**This investment pays dividends for life.**



## Discover the Lexington Square Lifestyle

Lexington Square is a full-service senior living residence serving adults who seek generous benefits of community living, new friendships, daily meals, activities and nurturing care, if needed. You decide how much help you need or want...and we respond, as you wish.

Elmhurst Location: 630-409-1167  
Lombard Location: 630-687-9446



**Lexington  
Square**

[www.lexingtonsquares.com](http://www.lexingtonsquares.com)



# PARK DISTRICT AFFILIATE GROUPS

An affiliate group is a not-for-profit organization that supplements Elmhurst Park District services, meets the District's mission, and serves the Elmhurst community, but is independent from the District's operations. Visit [epd.org/affiliate-groups](http://epd.org/affiliate-groups) for more information or contact us at (630) 993-8924.

## ACCESS SPORTS

[elmhurstaccesssports.org](http://elmhurstaccesssports.org)

Access Sports provides young athletes with disabilities in and around Elmhurst, IL access to team sport activities to learn new skills, encourage teamwork, and realize that team sports can be fun, yet competitive.

## CRESTVIEW GARDEN CLUB

[crestviewgardenclub@yahoo.com](mailto:crestviewgardenclub@yahoo.com)

A non-profit, non-sectarian family club devoted to the interest of horticulture.

## ELMHURST BICYCLE CLUB

[elmhurstbicycling.org](http://elmhurstbicycling.org)

Offering numerous rides and social activities while providing advocacy for bicyclists.

## ELMHURST GARDEN CLUB

[elmhurstgardenclub.org](http://elmhurstgardenclub.org)

Contributing time and funds to encourage the advancement of horticulture and provide an outlet of expression for its members.

## ELMHURST RUNNING CLUB

[elmhurstrunningclub.com](http://elmhurstrunningclub.com)

Offering year-round runs and training as well as numerous social events.

## ELMHURST SYMPHONY ORCHESTRA

[elmhurstsymphony.org](http://elmhurstsymphony.org)

Well-performed symphonic music by community musicians.

## GREENMAN THEATRE TROUPE

[greenmantheatre.org](http://greenmantheatre.org)

A not-for-profit organization whose purpose is to present live theatre productions for cultural education, entertainment and inspiration to the community and to foster and develop, through theatrical workshops and classes, the artistic talents of members and community members.

## SPIRITO! SINGERS

[spiritosingers.org](http://spiritosingers.org)

A choral organization comprised of three distinct auditioned ecumenical choirs: Bravura, Ragazze and the Men of Spirito!

# ELMHURST ART MUSEUM

## ART, EDUCATION & ARCHITECTURE

150 S. Cottage Hill Avenue, Elmhurst, Illinois 60126 | (630) 834-0202

Museum Hours | Tuesday - Sunday: 11AM - 5PM | Closed Mondays

## SUMMER CAMPS



### Summer Break Art Camp

Ages 8-12 | One-week sessions

Fee: \$265 Non-members / \$238.50 Premium Members

Full Day: M - F 9:00 - 3:00 PM

### Summer Break Junior Art Camp

Ages 5-7 | One-week sessions

Fee: \$265 Non-members / \$238.50 Premium Members

Half Day Fee: \$165 Nonmembers / \$148.50 Premium Members

Full Day: M - F 9:00 AM - 3:00 PM  
Half Day AM: M - F 9:00 AM - 11:30 AM  
Half Day PM: M - F 12:30 PM - 3:00 PM

There's a reason why Elmhurst Art Museum's camps are so popular, and this year is no exception! Kids love getting together and making messes in a fun and safe environment. Our inspiring camp counselors help guide them through the creative process.

At our Summer Camps, each week's curriculum is uniquely themed, so no two weeks are the same. Our campers also find inspiration through a variety of hands-on activities in our Education Center and outdoors in Wilder Park. Building sculpture and painting with multimedia, ceramics, printmaking, and experiencing first-hand the art exhibitions at the Museum help kids develop new skills in a fun and energetic environment.

Following the guidelines provided by the CDC and local public health professionals, we have updated policies for our summer camps. Check our website for more information about our updated policies.

### Available Dates:

June 15 - 19  
June 22 - 26  
June 29 - July 3  
July 6 - 10  
July 20 - 24  
July 27 - 31  
August 3 - 7  
August 10 - 14

All dates subject to change based on the effects from the coronavirus. Check out our website, which will be updated with any changes.

---

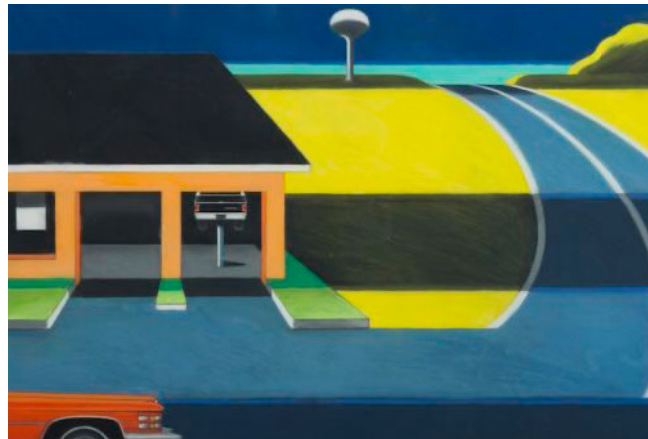
# EXHIBITIONS



## A Space Problem

Organized by David Salkin  
June 30 – November 15, 2020

One half of the McCormick House will feature mid-century furnishings along with works by local artists and architects. Designer David Salkin organized the exhibit as a home with a range of paintings, patterned rugs, ceramics, photo collages, and design objects. Featured artists include: Marshall Brown, Jennefer Hoffman, Sterling Lawrence, David Salkin, and Geoffrey Todd Smith. This combination of new and vintage works is organized in conjunction with a full wing dedicated to models, historical photographs, and stories about the McCormick House's uniqueness as a prefab prototype by the famed modernist Mies van der Rohe.



## Sandra Jorgensen

January 25 - August 23, 2020

The artist-curator Sandra Jorgensen held positions as professor and chair at Elmhurst College, and curator of the Elmhurst College Art Collection, for many years. Her work and influence have largely been overlooked, but her efforts, including curating and promoting the work of the Chicago Imagists, continue to have a major impact nationally and internationally. This survey exhibition of Jorgensen's work—including a never-before-printed photo series of Chicago Imagists in their homes and the re-creation of a mural commissioned for a Chicago Public Library—recognizes her accomplishments, and places her work amongst the larger stories of Chicago and Midwestern artists.

---

# EVENTS

\*Due to COVID-19, the museum has made numerous adjustments to its schedule. Please check our website for full details of classes, camps, and other program listings.

The museum has reopened along with other businesses with protocol limiting groups of people and other guidelines from the CDC. Thank you for your continued support and patience during this challenging and unprecedented time. We've missed you and we're excited to welcome back visitors. The museum will look and feel different because we are committed to the safety of our community and visitors. See our website for more details about advanced ticket purchases and other COVID protocol.

# REGISTRATION INFORMATION

## REGISTRATION IS NOW OPEN REGISTER AT EPD.ORG

### IF YOU HAVE AN ACTIVE ACCOUNT

- Click online registration button on front page at epd.org.
- Log in with your username and password. If you forgot your password, click FORGOT PASSWORD.

### IF YOU DO NOT HAVE AN ACTIVE ACCOUNT

- Click registration button on front page at epd.org.
- Click "Create An Account".
- Fill out information form. Add additional household members by clicking "Add New Member". Please make sure all family household members are input into information form before clicking "Save".
- Activation of new account is immediate, but will be considered a Non-Resident. Resident Status on account will require proof of residency at the Wagner Community Center.

### ONCE YOU ARE LOGGED IN

- Click "Programs" or a "Quick Links" category to search for programs.
- Under "Activity Search Criteria" you can limit your search or input the program code from the brochure to locate the program.
- When you have a program listing displayed, you can click on the 'i' to learn more information about the program.
- Once you find the program you're interested in, click the plus sign to the left of that program to add to your shopping cart.
- Click 'Add To Cart' on the bottom left of the screen to confirm checkout.

Note that if registering with an iPad or mobile device, it is recommended you view the screen in landscape mode. Pop-up windows may not display properly.

### ONLINE ACCOUNT QUESTIONS

E-mail: [registration@epd.org](mailto:registration@epd.org)

### DROP-BOX REGISTRATION

Drop off registration form along with payment at Wagner Community Center, The Abbey (24 hour drop box provided) or Courts Plus.

*The Elmhurst Park District does not discriminate on the basis of race, color, sex, age, national origin, religion or disability in employment, treatment of visitors and users, use of parks and facilities, or admission to and participation in programs and activities of the District in compliance with the Illinois Human Rights Act, Title VII of the 1964 Civil Rights Act, Section 504 of the Rehabilitation Act of 1973 as amended, Title II of the Americans with Disabilities Act and the State of Illinois and U.S. Constitution. For information concerning rights and provisions under ADA or to inform us of program, facility or service inaccessibility, please call the compliance officer at (630) 993-8915. We invite any resident with a special need to contact us upon registration for a smooth inclusion.*

### WHAT ARE THE AGE REQUIREMENTS?

All program participants must be of the specified age by the first day of class unless otherwise noted.

### CAN I GET A REFUND?

- Withdrawals are due by 9 am the Monday one week prior to the start of the camp session.
- Refunds must be requested through email or over the phone.
- Full refunds are issued if a program is cancelled.

### WHAT IF MY CHECK IS RETURNED?

Any check returned by the bank to the Elmhurst Park District for any reason will incur a \$25 fee. Additional registrations will not be accepted until all outstanding balances have been paid.

### IS FINANCIAL ASSISTANCE AVAILABLE?

The Elmhurst Park District recognizes that there are residents living within District boundaries who are unable to participate in programs due to economic hardships. Applications for financial assistance may be picked up at the Wagner Community Center, and at Courts Plus for Courts Plus memberships and programs (online at [www.epd.org/downloads/registration-form-downloads](http://www.epd.org/downloads/registration-form-downloads)).

### INSURANCE COVERAGE

Insurance coverage for injuries suffered while participating in programs or utilizing park facilities is not provided by the Elmhurst Park District.

### MEDICAL DISPENSING

Please complete a medication dispensing form (online at [epd.org/downloads/registration-form-downloads](http://epd.org/downloads/registration-form-downloads)) prior to the start of program. Alert staff of allergies or medical dispensing forms.

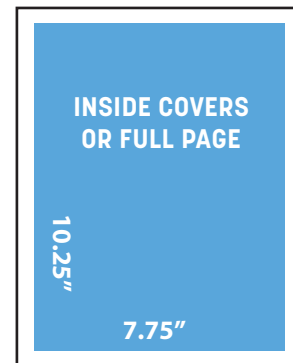
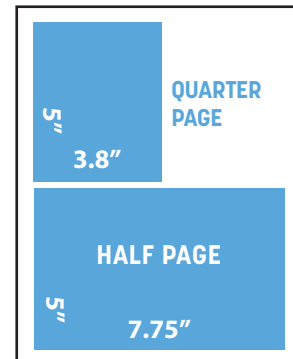
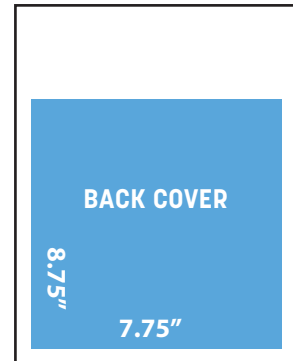




# BROCHURE ADVERTISING



## AD SIZES FULL COLOR



We'd love to work together and promote your business to the Elmhurst community in the seasonal brochure!

The Elmhurst Park District seasonal brochure is shared to over 17,000+ households in Elmhurst and throughout the community. These brochures are used as a household reference guide with a shelf-life of up to three months.

Take advantage of the opportunity for your company's message to be included in a publication that reaches all Elmhurst residents four times per year.

*Subject to availability.*

**LET'S GET STARTED!  
CONTACT KARI AT  
(630) 993-8923 OR  
EMAIL [KFELKAMP@  
EPD.ORG](mailto:KFELKAMP@EPD.ORG)**

# MEMORIALS AND GIFTS

The Elmhurst Park District's mission is to provide experiences for the lifetime enjoyment of people who live and play in Elmhurst. Much of what the District provides would not be possible with tax dollars alone. Private help and strong partnerships are essential if we are to continue to enhance our recreation and parks system. Love your parks...and give a gift that lasts a lifetime.

## COMMEMORATIVE BRICKS PROGRAM

The Elmhurst Park District invites you to honor a loved one or commemorate a special occasion with a permanent engraved brick paver. With seven unique locations to choose from, including the Diana Nicholas Memorial Garden at Wilder Mansion, The Hub at Berens Park, and the Wilder Woodland Walkway, you're sure to find the perfect spot for your message.

## PARK BENCH MEMORIAL PROGRAM

Create a dedicated space to commemorate a special person in your life or celebrate a special event with a Park Bench Memorial. Once installed, park benches are marked with a 2" x 4" bronze plaque and can be personalized with up to three lines of type. The commemorative park bench serves as a beautiful lasting remembrance that will benefit the community for many years.

## LAMPOST MEMORIAL PROGRAM

Framing the Prairie Path, Elmhurst's lampposts light the way for the hundreds of bikers, walkers, runners and nature enthusiasts that traverse its length each day. With a donation to the People for Elmhurst Parks Foundation (PEP), a bronze plaque will be installed on an available lamppost to preserve the legacy of your loved one or commemorate a special occasion.

## CASH DONATIONS

Cash donations are a direct way to show your love for the parks. Donations can be unrestricted or restricted to a particular park, building, or program area.

## LAND TRUSTS

The development and protection of green space is a key objective of the District. Land trusts are a wonderful way to ensure more green space for future generations.

## WILLS & LIVING TRUSTS

The Elmhurst Park District benefits from your planned future support of our parks and facilities. Much of the valued green space in the community today is the result of generous Elmhurst residents.

For information about our Tree Memorial, Lamppost Memorials and Park Bench programs, e-mail [aferrentino@epd.org](mailto:aferrentino@epd.org) or call (630) 993-8915. For Commemorative Bricks e-mail [nmelesio@epd.org](mailto:nmelesio@epd.org) or call (630) 993-4728. For Cash Donations, Trusts, and Wills & Living Trusts e-mail [kfelkamp@epd.org](mailto:kfelkamp@epd.org) or call (630) 993-8923.



# PARKS AND FACILITIES MAP

## PARKS

- 1 The Abbey
- 2 Ben Allison Park
- 3 Berens Park
- 4 Butterfield Park
- 5 Conrad Fischer Park
- 6 Crescent Park
- 7 Crestview Park
- 8 East End Park
- 9 Eldridge Park
- 10 Glos Memorial Park
- 11 Golden Meadows
- 12 Jaycee Tot Lot
- 13 Kiwanis Park
- 14 Maple Trail Woods
- 15 Marjorie Davis Park
- 16 Pioneer Park
- 17 Plunkett Park
- 18 Salt Creek Park
- 19 Sleepy Hollow Park
- 20 Van Voorst Park
- 21 Washington Park
- 22 Wild Meadows Park
- 23 Wild Meadows Trace
- 24 Wilder Park
- 25 York Commons Park

## FACILITIES

- A Administrative Office
- B The Abbey Senior Center
- C Courts Plus Fitness Center
- D The Hub at Berens Park
- E Joanne B. Wagner Community Center
- F Eldridge Park Recreation Building
- G Norman P. Smalley Pool/Skate Park
- H East End Pool
- I Maintenance Facility
- J Safety Town/The Depot
- K Sugar Creek Golf Course
- L Butterfield Park Recreation Building
- M Crestview Park Recreation Building
- N Wilder Park Recreation Building
- O Wilder Mansion
- P Wilder Park Conservatory & 225 Prospect Building

## SCHOOLS

- Q York High School
- R Bryan Middle School
- S Churchville Middle School
- T Sandburg Middle School
- U Conrad Fischer
- V Edison
- W Emerson
- X Field
- Y Hawthorne
- Z Jackson
- AA Jefferson
- BB Lincoln



# PARKS AND FACILITIES GUIDE

## PARKS

	☀ DENOTES LIGHTED COURTS	ACRES	MILES OF WALKING TRAILS	BASEBALL/SOFTBALL FIELD	BASKETBALL COURT	FUTSAL COURT	GROUP PICNIC AREA	GROUP PICNIC SHELTER	ICE SKATING	PLAYGROUND	PICKLEBALL COURT	RESTROOMS	ROLLER HOCKEY	SAND VOLLEYBALL COURT	SLED HILL	SOCCER/FOOTBALL FIELD	TENNIS COURT
The Abbey	407 W. St. Charles Road	1.89															
Ben Allison Park	444 S. West Avenue	2.75		•						•					•		
Berens Park	493 Oaklawn Avenue	65.53	.72	•	•		•			•		•		•	•	•	☀
Butterfield Park	385 E. Van Buren	24.56	.57	•				•		•	•	•				•	☀
Conrad Fischer Park	200 E. Diversey Avenue	13.21		•	•	•				•			•			•	•
Crescent Park	465 S. Fair Avenue	.61															
Crestview Park	245 E. Crestview	11.14		•	•					•	•				•	•	•
East End Park	463 Schiller Street	13.55		•	☀					•	•	•				•	☀
Eldridge Park	363 Commonwealth Lane	43.26	1.50	•	•				•	•	•		•		•	•	•
Former Redeemer*	155 E. St. Charles Road																
Glos Memorial Park	120 N. Hampshire Avenue	.94															
Golden Meadows		3.16														•	
Great Western Prairie	(Maintained by Elmhurst Park District)	12.14	.50														
Illinois Prairie Path	445 N. Larch		2.13														
Jaycee Tot Lot	451 E. Madison Street	.58								•							
Kiwanis Park	460 W. Madison Street	1.26															
Maple Trail Woods	285 W. Grantley Avenue	93.61															
Marjorie Davis Park	517 S. Mitchell Avenue	4.79	.26	•	•					•							
Pioneer Park	186 S. West Avenue	4.89				•				•						•	
Plunkett Park	(Owned by Elmhurst Park District)	16.03	.44	•	•					•		•					
Salt Creek Greenway Trail	574 W. Second Street		3.6														
Salt Creek Park	610 S. Rex Boulevard	10.00	.3	•			•	•		•		•					
Sleepy Hollow	360A E. Crescent Avenue	.63															
Van Voorst Park	455 S. Poplar Avenue	2.92		•												•	
Washington Park	580 S. Stratford Avenue	3.20		•	•					•							
Wild Meadows Park	Paralleling Prairie Path	5.38								•							
Wild Meadows Trace	175 Prospect	51.99															
Wilder Park	665 S. York	17.30	1.42				•			•		•					•
York Commons		11.62		•						•		•					

## FACILITIES

<b>225 Prospect</b> - 225 Prospect Ave.	<b>Eldridge Park Recreation Bldg</b> - 363 Commonwealth Ln.	<b>Skate Park at York Commons</b> - 665 S. York
<b>Administrative Office</b> - 375 W. First St.	<b>Former Redeemer*</b> - 155 E. St. Charles Road	<b>Sugar Creek Golf Course</b> - 500 E. Van Buren, Villa Park
<b>The Abbey</b> - 407 W. St. Charles Rd.	<b>The Hub at Berens Park</b> - 493 Oaklawn Ave.	<b>Wilder Mansion</b> - 211 Prospect Ave.
<b>Butterfield Park Recreation Building</b> - 385 E. Van Buren St.	<b>Joanne B. Wagner Community Center</b> - 615 N. West Ave.	<b>Wilder Park Conservatory</b> - 225 Prospect Ave.
<b>Courts Plus</b> - 186 S. West Ave.	<b>Maintenance Facility</b> - 985 S. Riverside Dr.	<b>Wilder Park Recreation Building</b> - 175 Prospect Ave.
<b>Crestview Park Recreation Building</b> - 245 E. Crestview Ave.	<b>Norman P. Smalley Pool</b> - 665 S. York	
<b>East End Pool</b> - 463 Schiller	<b>Safety Town/The Depot</b> - 511 S. York	

\*Temporary name